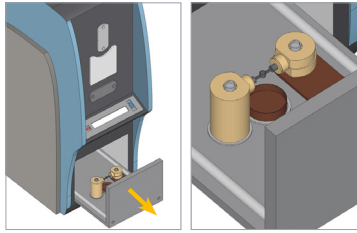
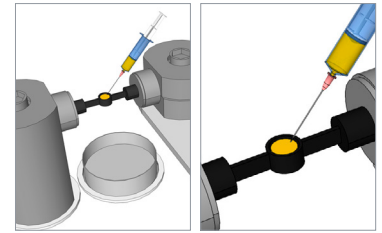


KEY STEPS IN DELIVERING TECHNEGAS

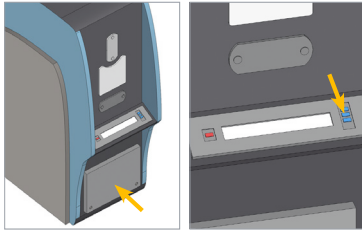
1 OPEN DRAWER AND LOAD CRUCIBLE



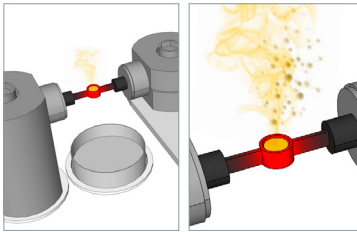
2 ADD ^{99m}TECHNETIUM INTO THE CRUCIBLE



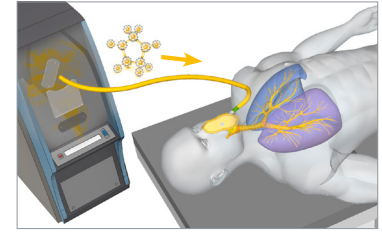
3 CLOSE DRAWER AND INITIATE SIMMER STAGE



4 INITIATE BURN SEQUENCE TO CREATE TECHNEGAS



5 DELIVER TECHNEGAS TO PATIENT VIA THE PATIENT ADMINISTRATION SET (PAS)



TECHNEGASPLUS GENERATOR SPECIFICATIONS



GENERAL

Mains Current:

Steady state: <0.2 Ampere rms
Max. current (15 Sec): 20 Ampere rms

Installation Requirements:

Mains power line: 200 - 240 VAC
Supply frequency: 50 - 60 Hz

* single dedicated line (20 Amps)



DIMENSIONS

Unboxed machine: Shipping box:

Length: 89 cm	Length: 110 cm
Width: 50 cm	Width: 63 cm
Height: 137 cm	Height: 119 cm
Weight: 130 kg	Weight: 157 kg

Inverted machine for shipping:

Height: 101 cm



ENVIRONMENTAL

Ambient Temperature:

10 - 40 degrees C

Ambient Air Pressure :

70 - 106 kPa (700 - 1060 mBar)

Ambient Humidity:

0 - 95% non-condensing

Argon:

>99.9% for Technegas



ARGON HIGH PRESSURE REGULATOR

Regulator output:

Maximum Outlet Pressure	150 kPa	1.48 Atm	21.75 PSi
Maximum Flow Output	45 litres/min	11.88 US gallons/min	95 SCFH

Regulator connections

Gas Bottle Connection	as per your local requirements
Regulator Output	5/8" UNF RH



RESUSCITATOR BAG

not approved for use in the EU

For adults only

use regular pediatric one for children